

COLOUR RESTORER

PRODUCT DESCRIPTION

- Stain resistant, water repellent, colour enhancer for black limestone, slate and darker absorbent natural stones.
- Improves the overall visual appearance of the substrate.

IMPORTANT BEFORE USE

Do not use on crystallized, polished materials or ceramics. Do not apply during rain, frost or in direct sun. Apply only when temperature is between 5°- 25°C. Always use product in a ventilated space.

Use PROTECTiT Efflorescence Remover if any efflorescence is visible prior to application. Domestic stains can be cleaned with PROTECTiT Oil Remover. Following traffic induced wear colour enhancement can be regenerated by re-applying product. For Health & Safety instructions, first aid measures, spillages and disposal instructions, see separate Health & Safety Data Sheet (MSDS).

APPLICATION

Always carry out a test area first to ensure the finished result is acceptable.

- This product is ready to use, do not dilute. Shake well before use.
- Do not pour directly on to paving.
- Apply using a paint pad to one paver at a time, ensuring even distribution of the product.
- Finish the application at the joint of each paver
- Wipe the product from each paver as you go (leave for approximately 2 minutes). Failure to remove residue properly will result in a slippery surface.
- For very absorbent surfaces apply a second coat within 20 minutes of the initial coat ensuring all excess of the product is removed from the surface within the given time frame.
- Once an application has been applied do not walk or drive on the coated area for at least 24 hours after application.
- Allow product to cure for 24hrs before subjecting to heavy use – curing times can increase significantly in colder conditions.

COVERAGE

1 Litre covers 30m² (depending on porosity and texture of the surface)

SHELF LIFE & STORAGE

24 months from the date of manufacture in the original unopened container. Store locked up in dry place between 5°C and 25°C in the original container.

KEY FEATURES

- Effective colour enhancement
- Easy removal of stains
- One coat provides a matte finish
- UV Resistant
- Brings faded limestone back to black



TECHNICAL DATA

- **Colour:** Clear
- **Odour:** Slight / pleasant
- **Form:** Liquid
- **Coverage:** up to 30m²/litre
- **PH:** 8-9
- **Specific Gravity @ 25°C:** 1.03
- **Application Temperatures:**
 - Minimum 10°C
 - Maximum 25°C

CLEANING OF EQUIPMENT

Remove as much excess product as possible and clean tools and equipment immediately after use with soapy water.

IMPORTANT / LIMITATIONS

- Substrate temperature must not exceed 20°C during application.
- Do not use in wet weather or if rain is forecast within 4 hours of application.
- Not suitable for non porous surfaces e.g. quarry tiles, engineering brick, polished or glazed stone and surfaces.
- Keep pets away until surface is fully dry.
- Do not apply in direct sunlight. In hot weather conditions apply early in the morning before surface temperature starts to rise.

MAINTENANCE

- Surfaces should be maintained using non acid patio cleaner.
- On darker surfaces clay soiling should be removed immediately otherwise it may cure and become difficult to remove, especially on hot days.

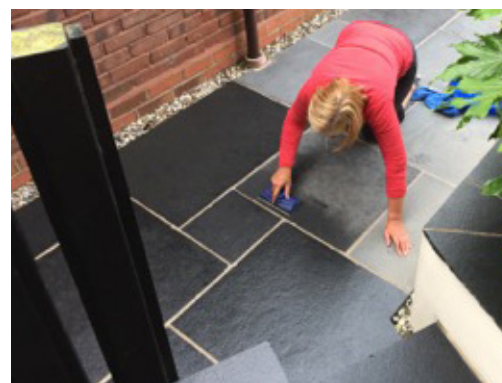
Before

After application



FREQUENTLY ASKED QUESTIONS

- **If after two applications the surface is still not enhanced, may I apply more ?**
Yes, but remove excess material from the surface with a clean soft cloth as you apply the product, this must be tested on a small area before proceeding.
- **Can Colour Restorer be diluted prior to application ?**
No, the product is ready to use and should not be diluted.
- **Can Colour Restorer be used to seal grout ?**
Yes. Ideally the grout should be untreated and cement-based, to ensure the best results. Previously treated cement-based grout should be first treated in a small discrete area to determine effectiveness and to ensure there is no discolouration to the joints. This product is not recommended for epoxy, polyurethane or pre-mixed, majestic-type grouts.
- **What level of water repellency can I expect ?**
This all depends on the substrate that the Colour Restorer is applied to and how many coats has been applied. It will take 7 days from the last coat to achieve full performance. This product is designed to give superior performance over and above other products.
- **Is the substrate still waterproof after the water beading has reduced ?**
It is normal for the water beading to reduce after the first few weeks/months due to the excess sealer being worn/weathered off the surface. The sealer below the surface of the stone or tile will still be active, there is no need to reapply the product.
- **If I have applied one coat to obtain a Matte Finish and wish to have a gloss finish can I add another coat days / weeks later ?**
Yes - you can add further coats as long as the surface has been thoroughly cleaned first with a pH neutral cleaner ensuring free from dirt, grease, algae etc..., this must be tested on a small area before proceeding, depending on substrate gloss finish may be slippery when wet.
- **How long will the Matte or Gloss Finish last ?**
This is dependant on a number of factors such as natural characteristics of the Stone / Tile, amount of sealer applied, location i.e. weather or foot flow etc. The product is designed for long term performance.



- **If I have a gloss finish, can I revert back to a Matte Finish ?**

Deep Cleaner should remove enough excess to reduce the finish. Caution should be used and product instructions should be followed as damage to the coating may occur if used incorrectly. This must be tested on a small area before proceeding or call our Technical Helpline.

- **Will the treatment make my floor slippery ?**

Due to the number of different types of surfaces / textures along with varying application rates it is recommended that the customer tests the impact on a small inconspicuous area to ensure they are happy with the finished result. As this is a water repellent there will be surface beading initially which will reduce after a few weeks / months.

- **Why do I have residue visible on the surface ?**

This could be due to too much product being applied and the excess not being completely wiped off or it has been applied to a substrate which has been treated previously using a different sealer. For mild residue this can be rectified using Deep Cleaner. If it is due to the substrate being previously treated with a different sealer or heavy residue it is recommended that this is removed using Stone Reviver before re-applying the Colour Restorer.

- **Why has the surface turned white ?**

This could be due to the substrate being damp prior to applying the product or excess product being applied and the excess not being completely wiped off or it has been applied to a substrate which has been treated previously using a different sealer. For mild residue this can be rectified using Deep Cleaner to remove some of the product. If it is due to the substrate being previously treated with a different sealer or heavy residue it is recommended that this is removed using Stone Reviver before re-applying the Colour Restorer.

- **Why does the surface look patchy ?**

Mainly due to being unevenly applied to the substrate or spread too thinly. If this is the case use Deep Cleaner to clean the surface, allow the surface to completely dry and re-apply the Colour Restorer. If the substrate has been previously treated you will need to remove the coating first using a Stone Reviver before proceeding with another application of the product.

- **The enhanced effect has faded / sealer effect has disappeared after cleaning what should I do ?**

Only maintain sealed surfaces with pH neutral cleaners. Harsh cleaners such as acids, bleaches or steam cleaning may damage the effect / sealer. Once clean and dry apply another application of Colour Restorer.

Important: The content of this documentation is based on our experience of the product. PROTECTiT SP guarantees the quality of its products, but expressly declines any liability in the event of failure by the user to comply with the recommendations and conditions of use of said products, notably but not exclusively in the event of incorrect application, application by unqualified personnel, use of products not compatible with PROTECTiT SP products or bad weather conditions.